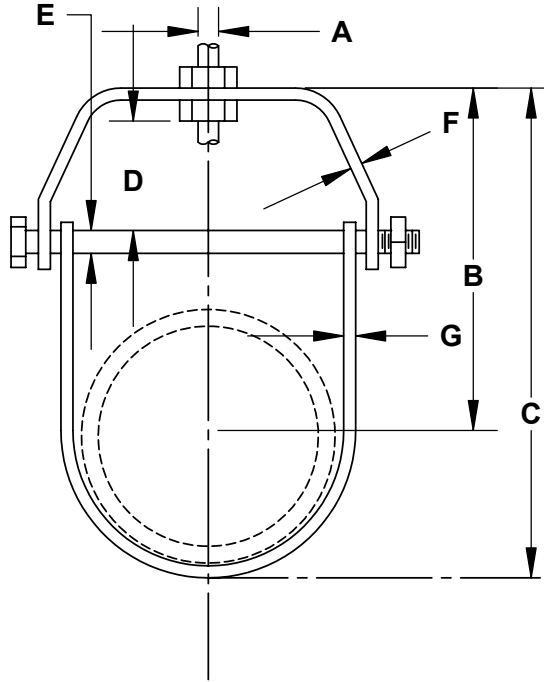


THE INFORMATION CONTAINED IN THIS DRAWING IS THE SOLE PROPERTY OF GREENFIELD MFG CO ANY REPRODUCTION IN PART OR WHOLE WITHOUT THE WRITTEN PERMISSION OF GREENFIELD MFG CO IS PROHIBITED.



Size	A	B	C	D	E	F-Top (MN THK)	G-Bottom (MN THK)	MAX REC LOAD (LBS)
1/2"	3/8"	1.5	2.0	0.62	1/4"	18ga x .75 (.050)	18ga x .75 (.045)	150
3/4"	3/8"	1.8	2.3	0.62	1/4"	18ga x .75 (.050)	18ga x .75 (.045)	200
1"	3/8"	2.2	2.8	0.88	1/4"	16ga x 1.0 (.060)	18ga x 1.0 (.045)	200
1.25"	3/8"	2.5	3.7	1.20	1/4"	16ga x 1.0 (.060)	16ga x 1.0 (.055)	200
1.5"	3/8"	2.8	4.0	1.20	1/4"	16ga x 1.0 (.060)	16ga x 1.0 (.055)	200
2"	3/8"	2.8	4.5	1.20	1/4"	14ga x 1.0 (.070)	16ga x 1.0 (.060)	250
2.5"	3/8"	3.8	6.0	2.00	1/4"	12ga x 1.0 (.100)	14ga x 1.0 (.067)	300
3"	3/8"	4.0	6.5	2.00	1/4"	12ga x 1.0 (.100)	14ga x 1.0 (.067)	300
4"	3/8"	4.7	7.0	2.00	5/16"	11ga x 1.25 (.115)	14ga x 1.25 (.070)	350

COMPLIES WITH MSS SP-58 TYPE 1  
WW-H-171 -E TYPE 12

**made in USA**

UNLESS OTHERWISE SPECIFIED DIMENSIONS ARE IN INCHES TOLERANCES ARE: FRACTIONS DECIMALS ANGLES + .XX+ .XX + 1 .XXX+.XXX	CAD GENERATED DRAWING, DO NOT MANUALLY UPDATE		<b>GREENFIELD MFG CO</b>	
	APPROVALS	DATE	9800 BUSTLETON AVE, PHILA, PA 19115	
	DRAWN EG	7-26-12	<b>CLEVIS ~ LIGHT</b>	
	CHECKED SB	7-26-12		
MATERIAL <b>STEEL</b>		A	<b>FIG. 104</b>	REV. <b>C</b>
FINISH <b>NONE</b>				
DO NOT SCALE DRAWING			CAD FILE: <b>104 REV C</b>	SHEET OF