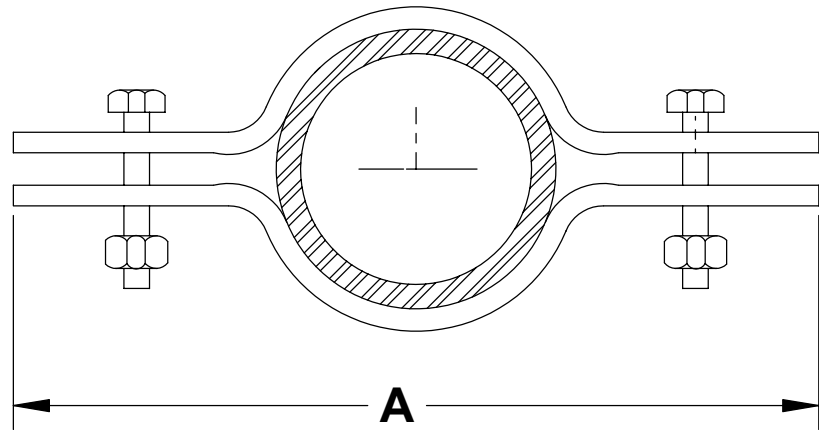


THE INFORMATION CONTAINED IN THIS DRAWING IS THE SOLE PROPERTY OF GREENFIELD MFG CO ANY REPRODUCTION IN PART OR WHOLE WITHOUT THE WRITTEN PERMISSION OF GREENFIELD MFG CO IS PROHIBITED.



SIZE	A	STOCK	BOLT	MAX REC LOAD
1/2	8.63	1/8 X 1.00	5/16 X 1.00	220
3/4	8.82	1/8 X 1.00	5/16 X 1.00	220
1	9.06	1/8 X 1.00	5/16 X 1.00	220
1-1/4	9.50	1/8 X 1.00	5/16 X 1.25	250
1-1/2	10.00	5/32 X 1.00	5/16 X 1.25	250
2	10.50	5/32 X 1.00	3/8 X 1.50	300
2-1/2	11.12	1/4 X 1.00	3/8 X 1.50	400
3	11.50	1/4 X 1.00	3/8 X 1.75	500
4	13.00	1/4 X 1.00	7/16 X 1.50	600
5	14.00	1/4 X 1.25	1/2 X 2.00	1200
6	15.00	1/4 X 1.50	1/2 X 2.00	1600
8	18.50	3/8 X 1.50	5/8 X 2.50	2500
10	21.00	3/8 X 2.00	5/8 X 2.50	2500
12	23.00	1/2 X 2.00	5/8 X 2.50	2700

**Made in USA**

**Complies with MSS-SP-58 Type 8**

UNLESS OTHERWISE SPECIFIED DIMENSIONS ARE IN INCHES		CAD GENERATED DRAWING, DO NOT MANUALLY UPDATE		<b>GREENFIELD MFG CO</b>	
TOLERANCES ARE:		APPROVALS	DATE	920 LEVICK ST , PHILA.,PA. 19111	
FRACTIONS	DECIMALS	ANGLES		P/N <b>RISER CLAMP</b>	
+/- 1/8	.XX +/- .03	.XX + 1		A	<b>FIG 108</b>
	.XXX +/- .01				REV.
MATERIAL		7/13		SCALE	CAD FILE:
<b>CQ STEEL</b>					SHEET OF
DO NOT SCALE DRAWING					