

THE INFORMATION CONTAINED IN THIS DRAWING IS THE SOLE PROPERTY OF GREENFIELD MFG CO ANY REPRODUCTION IN PART OR WHOLE WITHOUT THE WRITTEN PERMISSION OF GREENFIELD MFG CO IS PROHIBITED.

**APPROVALS:**

**LISTED**

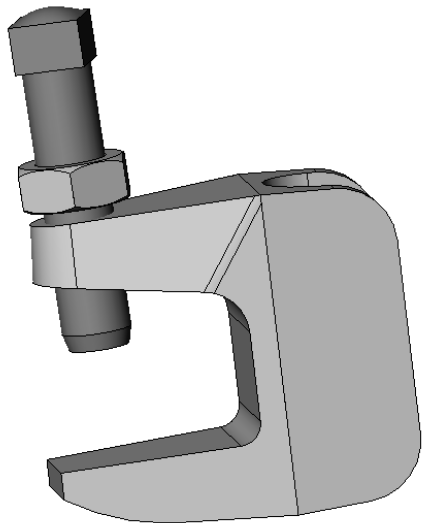
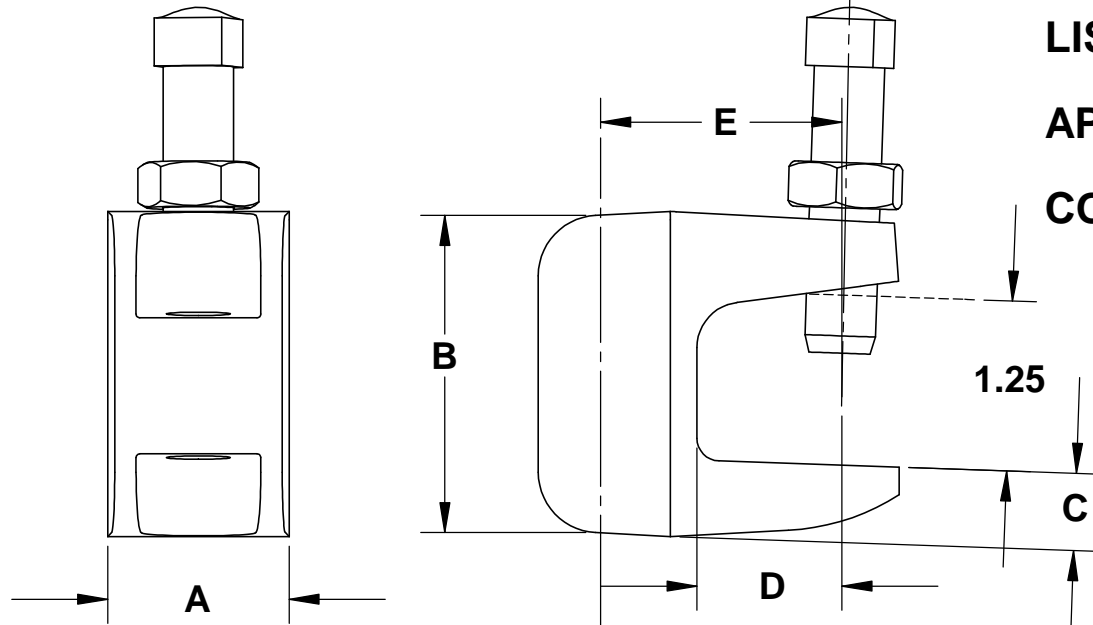


**APPROVED**



**COMPLIES WITH MSS SP-58 TYPE 19**

**SEE MSS SP-69 FOR PROPER SET SCREW RECOMMENDATIONS**



ROD SIZE	WT PER 100 PCS	MAX REC LOAD	CTN QTY	A	B	C	D	E
3/8	28	350#	100	.88	2.00	.31	.75	1.00
1/2	34	470#	100	.88	2.00	.31	.75	1.00
5/8	42	550#	50	1.00	2.25	.34	.75	1.25
3/4	80	700#	50	1.25	2.38	.41	.75	1.37

UNLESS OTHERWISE SPECIFIED DIMENSIONS ARE IN INCHES  
 TOLERANCES ARE:  
 FRACTIONS DECIMALS ANGLES  
 +/- 1/8 .XX +/- .03 .XX + 1  
 .XXX +/- .01

**MATERIAL**  
**DUCTILE IRON**

DO NOT SCALE DRAWING

CAD GENERATED DRAWING, DO NOT MANUALLY UPDATE

APPROVALS	DATE
DRAWN EG	3/12
CHECKED SB	3/12

**GREENFIELD MFG CO**  
 920 LEVICK ST , PHILA.,PA. 19111

**WIDE THROAT TOP BEAM CLAMP**  
**FIG 126**

A P/N REV.  
 SCALE CAD FILE: SHEET OF