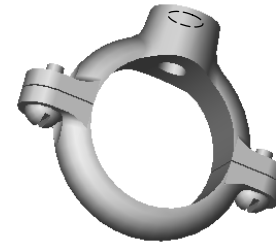
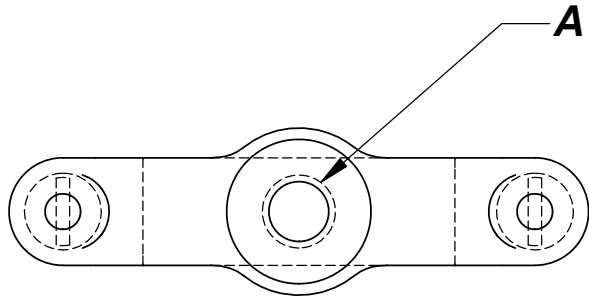
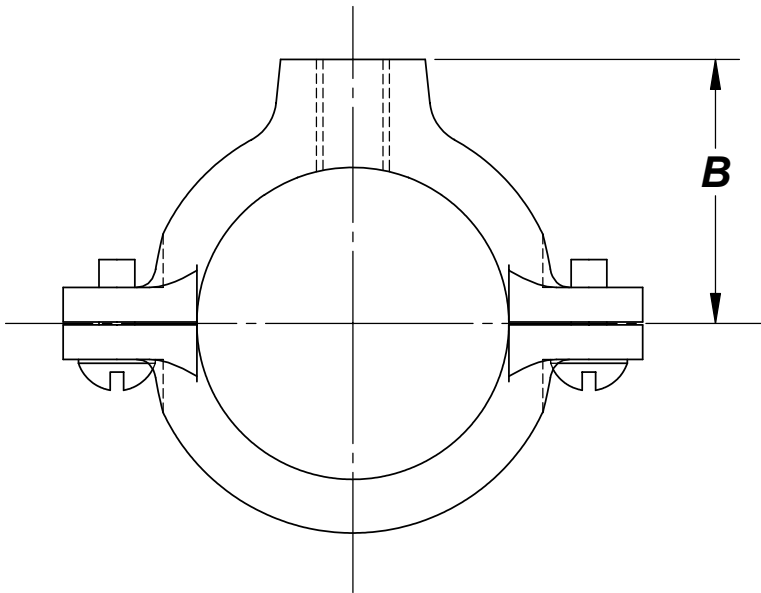


THE INFORMATION CONTAINED IN THIS DRAWING IS THE SOLE PROPERTY OF GREENFIELD MFG CO ANY REPRODUCTION IN PART OR WHOLE WITHOUT THE WRITTEN PERMISSION OF GREENFIELD MFG CO IS PROHIBITED.



FOR IRON PIPE

PIPE SIZE	A	B	WT / C APPROX	MAX REC LOAD
3/8	3/8	0.69	10	180
1/2	3/8	0.82	10	180
3/4	3/8	0.94	12	180
1	3/8	1.06	14	180
1-1/4	3/8	1.23	19	180
1 - 1/2	3/8	1.31	21	180
2	3/8	1.62	30	180



USE FIG 385
FOR SIZES 2-1/2 THRU 4

COMPLIES WITH WWH-171D TYP 25

UNLESS OTHERWISE SPECIFIED DIMENSIONS ARE IN INCHES TOLERANCES ARE: FRACTIONS DECIMALS ANGLES +/- 1/8 .XX +/- .03 .XX + 1 .XXX +/- .01	CAD GENERATED DRAWING, DO NOT MANUALLY UPDATE		GREENFIELD MFG CO	
	APPROVALS	DATE	920 LEVICK ST , PHILA.,PA. 19111	
MATERIAL DUCTILE IRON	DRAWN EG	11/05	P/N SPLIT RING HANGER	
	CHECKED SB	11/05	A	FIG 202 REV.
DO NOT SCALE DRAWING	SCALE	CAD FILE: 202.SLDDRW	SHEET OF	