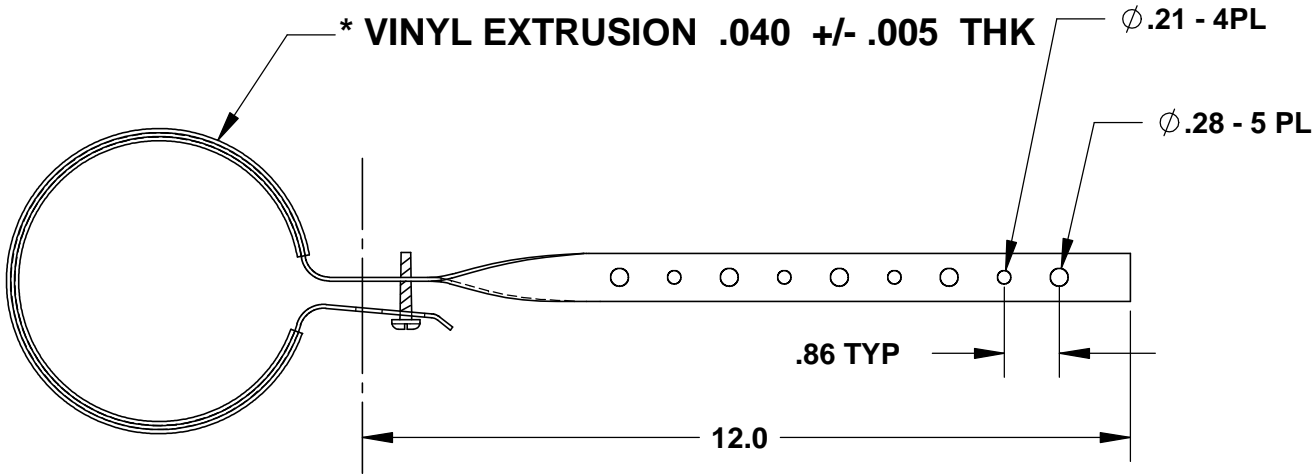
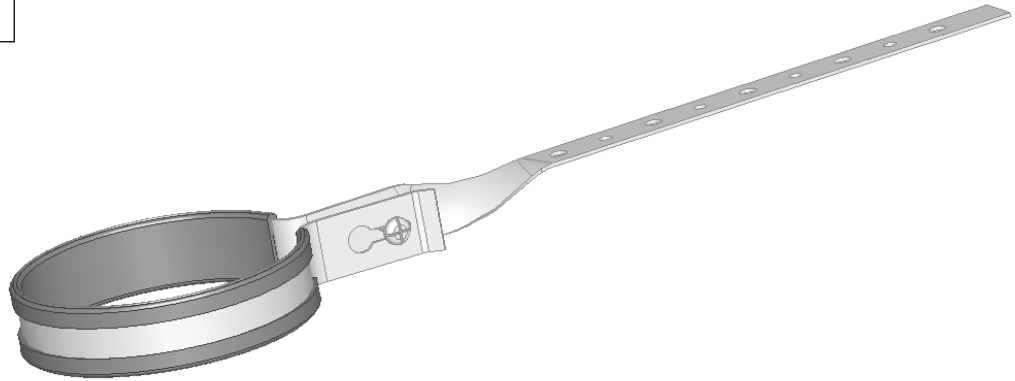


THE INFORMATION CONTAINED IN THIS DRAWING IS THE SOLE PROPERTY OF GREENFIELD MFG CO ANY REPRODUCTION IN PART OR WHOLE WITHOUT THE WRITTEN PERMISSION OF GREENFIELD MFG CO IS PROHIBITED.

MADE IN USA



SIZE	MATERIAL
1-1/2	18 GA X 1
2	18 GA X 1
3	16 GA X 1
4	16 GA X 1
6	16 GA X 1

MAX RECOMMENDED LOAD 150 LBS
MAX TEMPERATURE 150° F

* EXTRUSION COATING MATERIAL:
 SYLVIN 8925-80
 HARDNESS 80-90 A DUROMETER
 TENSIL STRENGTH 2400
 ELOGATION % 375

UNLESS OTHERWISE SPECIFIED DIMENSIONS ARE IN INCHES TOLERANCES ARE: FRACTIONS DECIMALS ANGLES + .XX+ .XX + 1 .XXX+.XXX	CAD GENERATED DRAWING, DO NOT MANUALLY UPDATE		GREENFIELD MFG CO	
	APPROVALS	DATE	920 LEVICK ST , PHILA.,PA. 19111	
	DRAWN EG		P/N DWV COATED	
	CHECKED SB	1/12	FIG 220	
MATERIAL STEEL GALVANZED			A	REV.
FINISH --			SCALE	CAD FILE: FIG220W.SLD
DO NOT SCALE DRAWING			SHEET	OF