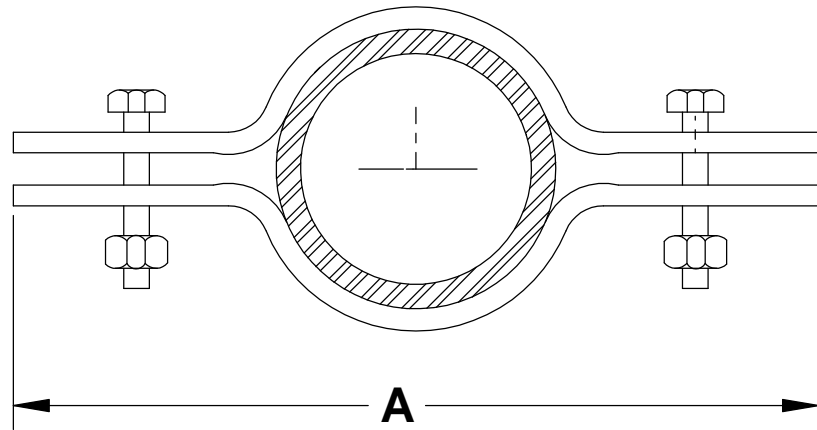


THE INFORMATION CONTAINED IN THIS DRAWING IS THE SOLE PROPERTY OF GREENFIELD MFG CO ANY REPRODUCTION IN PART OR WHOLE WITHOUT THE WRITTEN PERMISSION OF GREENFIELD MFG CO IS PROHIBITED.



SIZE	A	STOCK	BOLT	MAX REC LOAD
1/2	8.63	1/8 X 1.00	5/16 X 1.00	220
3/4	8.82	1/8 X 1.00	5/16 X 1.00	220
1	9.06	1/8 X 1.00	5/16 X 1.00	220
1-1/4	9.50	1/8 X 1.00	5/16 X 1.25	250
1-1/2	10.00	5/32 X 1.00	5/16 X 1.25	250
2	10.50	5/32 X 1.00	3/8 X 1.50	300
2-1/2	11.12	1/4 X 1.00	3/8 X 1.50	400
3	11.50	1/4 X 1.00	3/8 X 1.75	500
4	13.00	1/4 X 1.00	7/16 X 1.50	600
5	14.00	1/4 X 1.25	1/2 X 2.00	1200
6	15.00	1/4 X 1.50	1/2 X 2.00	1600
8	18.50	3/8 X 1.50	5/8 X 2.50	2500
10	21.00	3/8 X 2.00	5/8 X 2.50	2500
12	23.00	1/2 X 2.00	5/8 X 2.50	2700

Made in USA

UNLESS OTHERWISE SPECIFIED DIMENSIONS ARE IN INCHES TOLERANCES ARE: FRACTIONS DECIMALS ANGLES +/- 1/8 .XX +/- .03 .XX + 1 .XXX +/- .01	CAD GENERATED DRAWING, DO NOT MANUALLY UPDATE		GREENFIELD MFG CO	
	APPROVALS	DATE	920 LEVICK ST , PHILA.,PA. 19111	
MATERIAL	DRAWN	EG	P/N	RISER CLAMP
CQ STEEL ZINC COATED	CHECKED	SB	A	FIG 308
DO NOT SCALE DRAWING	3/12		SCALE	CAD FILE: SHEET OF