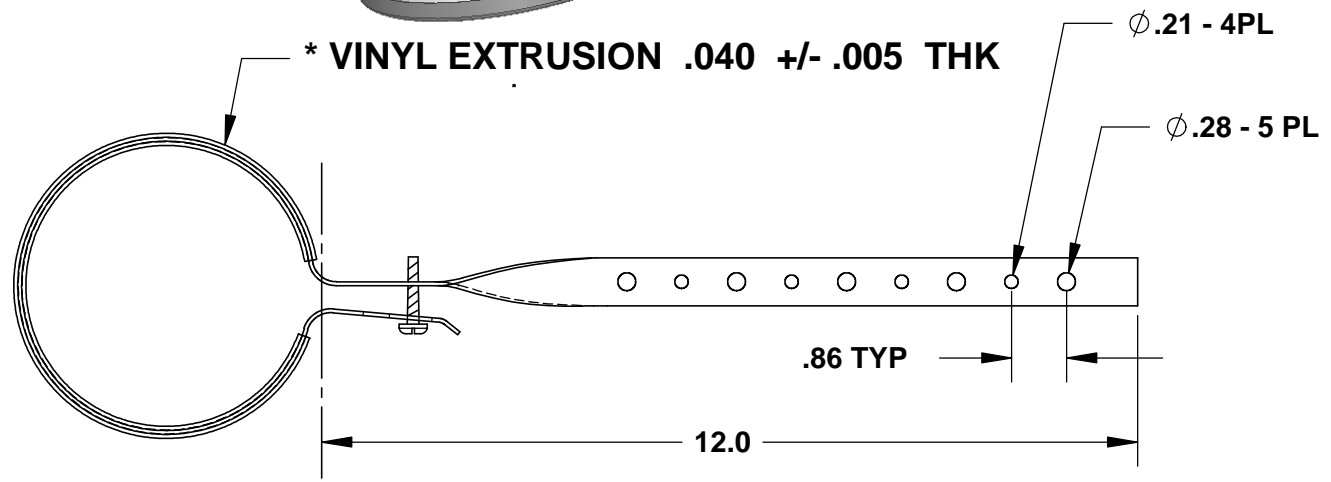
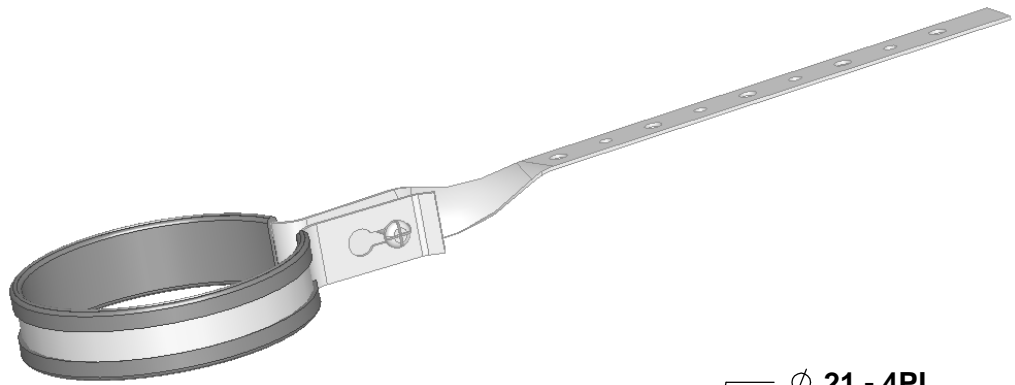


THE INFORMATION CONTAINED IN THIS DRAWING IS THE SOLE PROPERTY OF GREENFIELD MFG CO ANY REPRODUCTION IN PART OR WHOLE WITHOUT THE WRITTEN PERMISSION OF GREENFIELD MFG CO IS PROHIBITED.  
 © COPYRIGHT GREENFIELD MANUFACTURING 2007

**MADE IN USA**



| SIZE  | MATERIAL     |
|-------|--------------|
| 1-1/2 | 18 GA X 0.75 |
| 2     | 18 GA X 0.75 |
| 3     | 16 GA X 0.75 |
| 4     | 16 GA X 0.75 |
| 6     | 16 GA X 0.75 |

**MAX RECOMMENDED LOAD 150 LBS**  
**MAX TEMPERATURE 150° F**

\* EXTRUSION COATING MATERIAL:  
 SYLVIN 8925-80  
 HARDNESS 80-90 A DUROMETER  
 TENSIL STRENGTH 2400  
 ELOGATION % 375

|   |  |      |                                  |                                |
|---|--|------|----------------------------------|--------------------------------|
| UNLESS OTHERWISE SPECIFIED<br>DIMENSIONS ARE IN INCHES<br>TOLERANCES ARE:<br>FRACTIONS DECIMALS ANGLES<br>+ .XX+ .XX + 1<br>.XXX+.XXX | CAD GENERATED DRAWING,<br>DO NOT MANUALLY UPDATE |      | <b>GREENFIELD MFG CO</b>         |                                |
|   | APPROVALS  | DATE | 920 LEVICK ST , PHILA.,PA. 19111 |                                |
|   | DRAWN EG   | 1/12 | P/N <b>DWV COATED</b>            |                                |
|   | CHECKED SB                                       | 1/12 | A <b>FIG 320</b> REV.            |                                |
| MATERIAL<br><b>STEEL GALVANZED</b>  |  |      | SCALE                            | CAD FILE: FIG320W.SLD SHEET OF |
| FINISH --   |  |      |                                  |                                |
| DO NOT SCALE DRAWING  |  |      |                                  |                                |