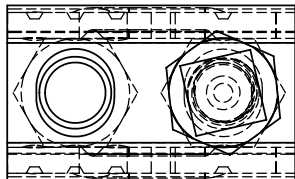
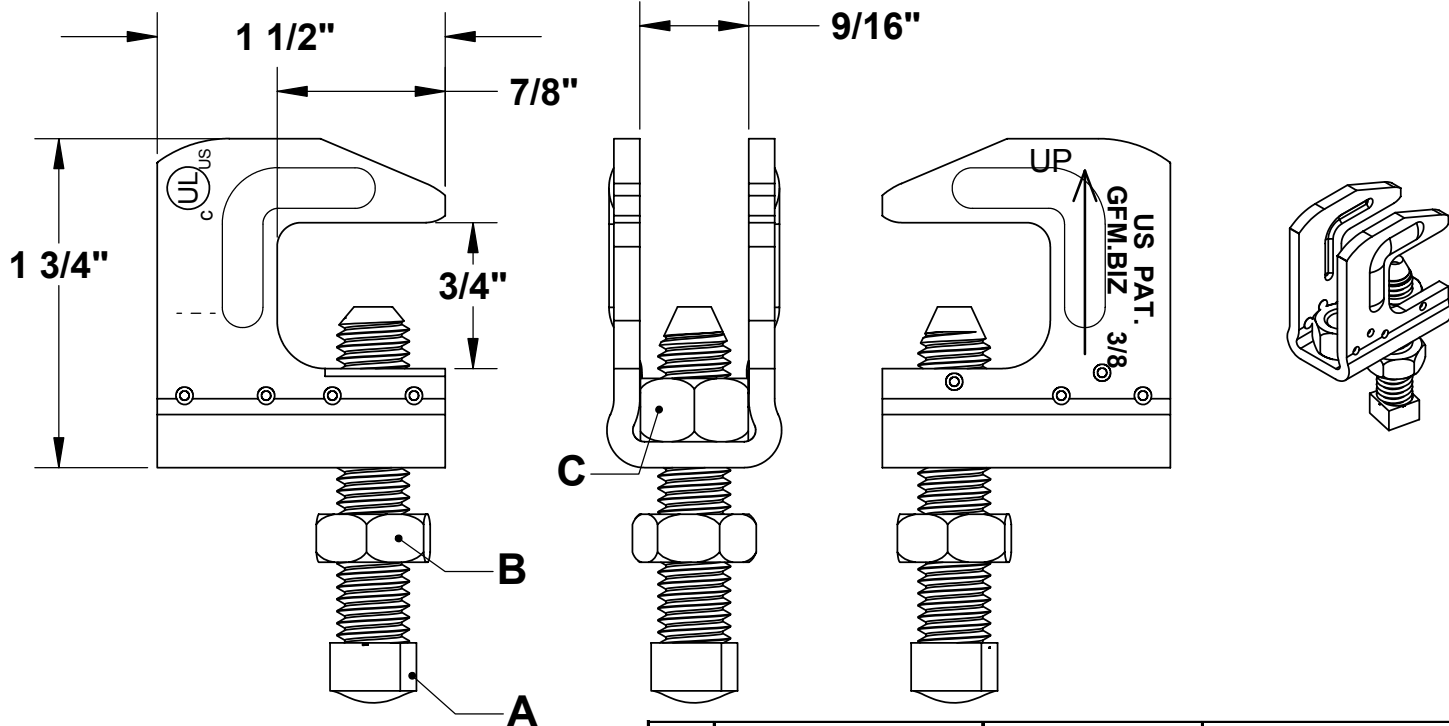


THE INFORMATION CONTAINED IN THIS DRAWING IS THE SOLE PROPERTY OF GREENFIELD MFG CO ANY REPRODUCTION IN PART OR WHOLE WITHOUT THE WRITTEN PERMISSION OF GREENFIELD MFG CO IS PROHIBITED.

11/17/17 EG UPDATED MARKING ON PART

No changes made without notification to FM or UL



A	SQUARE HEAD CUP POINT SET SCREW	3/8-16 X 1-3/4	SAE J429 GR 2, Zinc Plated STEEL (1010 MIN.), Case Hrdn. To 15N80 @ .0032-.010 Dp.
B	JAM NUT	3/8-16	ANSI/ASME B18.2.2. Zinc-Plated Grade 2 Steel
C	HEX NUT X 2	3/8-16	ANSI/ASME B18.2.2. Zinc-Plated Grade 2 Steel

REC. SET SCREW TORQUE 60 IN-LBS.

**MAX REC LOAD 400 LBS**  
**182 KG**

**MADE IN USA**

**US PAT. 8,882,056**

UNLESS OTHERWISE SPECIFIED DIMENSIONS ARE IN INCHES		CAD GENERATED DRAWING, DO NOT MANUALLY UPDATE		<b>GREENFIELD MFG CO</b>	
TOLERANCES ARE:		APPROVALS	DATE	9800 Bustleton Ave, Phila, PA 19115	
FRACTIONS	DECIMALS	EG	11-17	<b>NUTTY BEAM CLAMP FOR 3/8 THREAD ROD</b>	
+/- 1/16	.XX +/- .03	CHECKED	LB	A	P/N <b>325</b>
ANGLES	.XXX +/- .01				REF <b>6</b>
MATERIAL		DO NOT SCALE DRAWING		SCALE 1:1	CAD FILE <b>CLAMP12.7.SLDDRW</b> SHEET OF
<b>GALV STEEL .125 MIN G90 PER ASTM A653A</b>					