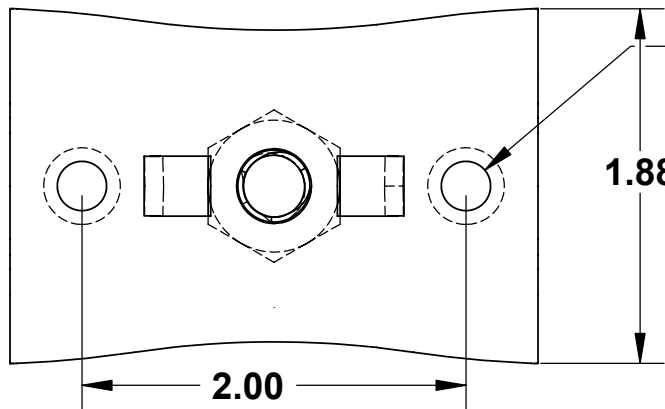
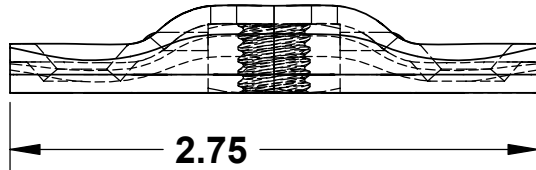


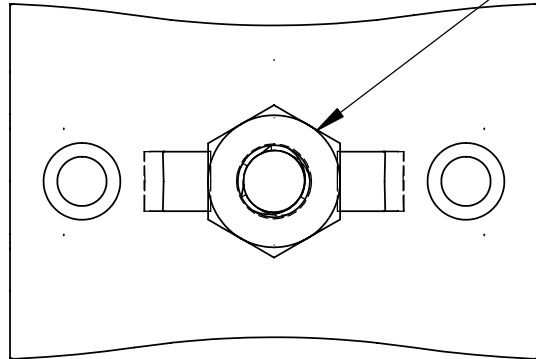
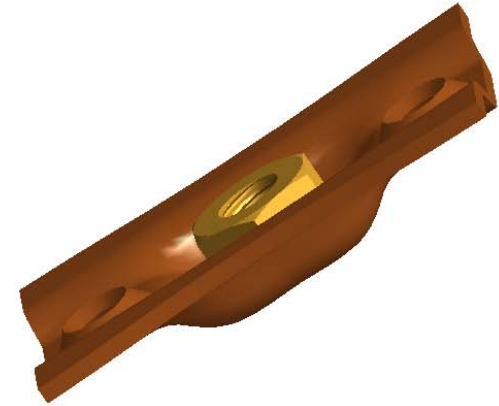
THE INFORMATION CONTAINED IN THIS DRAWING IS THE SOLE PROPERTY OF GREENFIELD MFG CO ANY REPRODUCTION IN PART OR WHOLE WITHOUT THE WRITTEN PERMISSION OF GREENFIELD MFG CO IS PROHIBITED.



$\phi$ .26  
COUNTER SINK FOR  
FLAT HEAD SCREW



HEAVY HEX NUT  
COPPER PLATED  
3/8 - 16 UNC  
FULLY CAPTIVATED



***made in USA***

**SAFE WORKING LOAD  
200 POUNDS LIMITED BY  
FASTENERS ATTACHED  
PROOF TESTED AT 2000 LBS  
TEST REPORTS AT WWW.GFM.BIZ**

UNLESS OTHERWISE SPECIFIED  
DIMENSIONS ARE IN INCHES  
TOLERANCES ARE:  
FRACTIONS    DECIMALS    ANGLES  
+/- 1/8    .XX +/- .03    .XX + 1  
              .XXX +/- .01

MATERIAL  
**13 GA. HR/CR STEEL  
COPPER PLATED**

DO NOT SCALE DRAWING

CAD GENERATED DRAWING,  
DO NOT MANUALLY UPDATE

APPROVALS		DATE
DRAWN	EG	2/13
CHECKED	SB	2/13

**GREENFIELD MFG CO**

920 LEVICK ST , PHILA.,PA. 19111

**BOWTIE FLANGE PLATE**

A P/N **FIG.489** REV.

SCALE **BOWTIE489** SHEET OF