

8 7 6 5 4 3 2 1

THE INFORMATION CONTAINED IN THIS DRAWING IS THE SOLE PROPERTY OF GREENFIELD MFG CO ANY REPRODUCTION IN PART OR WHOLE WITHOUT THE WRITTEN PERMISSION OF GREENFIELD MFG CO IS PROHIBITED.

**APPROVALS:**

**LISTED**

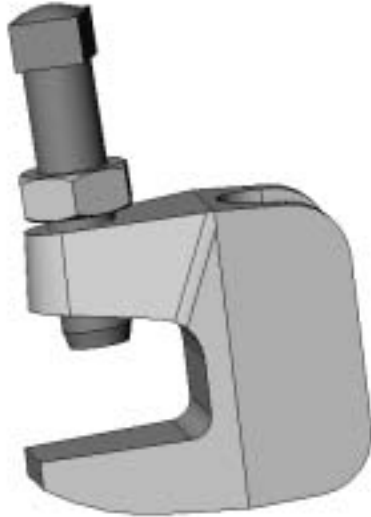
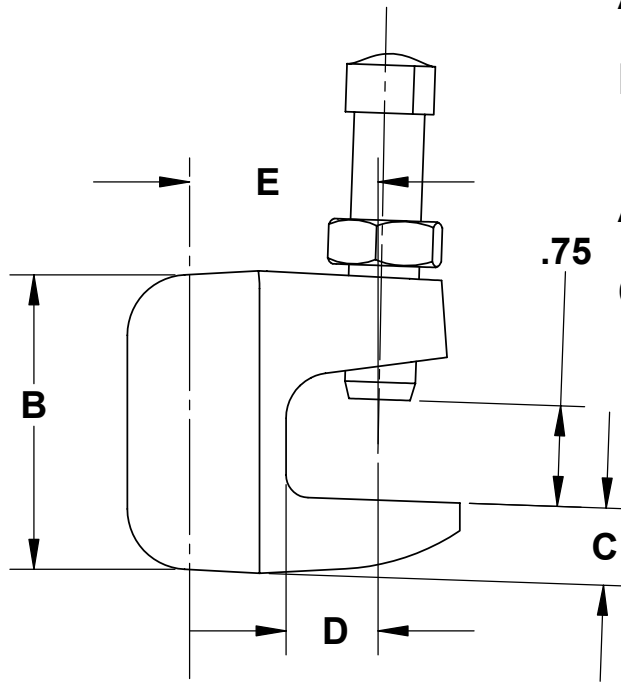
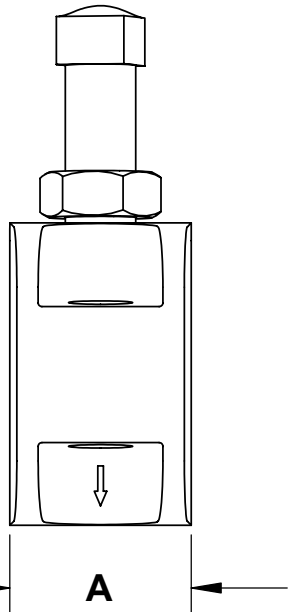


IMPORTED BY EMPIRE IND INC 62G

**APPROVED**



**COMPLIES WITH MSS SP-58 TYPE 19  
SEE MSS SP-69 FOR PROPER  
SET SCREW RECOMMENDATIONS**



ROD SIZE	WT PER 100 PCS	MAX REC LOAD	CTN QTY	A	B	C	D	E
3/8	28	350#	100	.88	1.50	.31	.50	1.00
1/2	34	470#	100	.88	1.50	.31	.50	1.00
5/8	42	550#	50	1.12	1.75	.34	.63	1.37
3/4	80	700#	50	1.37	1.87	.41	.63	1.37
7/8	84	1000#	25	1.37	1.87	.41	.63	1.37

UNLESS OTHERWISE SPECIFIED DIMENSIONS ARE IN INCHES  
TOLERANCES ARE:  
FRACTIONS DECIMALS ANGLES  
+/- 1/8 .XX +/- .03 .XX + 1  
.XXX +/- .01

MATERIAL **DUCTILE IRON  
ZINC PLATED**

DO NOT SCALE DRAWING

CAD GENERATED DRAWING,  
DO NOT MANUALLY UPDATE

APPROVALS	DATE
DRAWN EG	6/2/15
CHECKED SB	

**GREENFIELD MFG CO**

920 LEVICK ST , PHILA.,PA. 19111

**JUNIOR  
TOP BEAM CLAMP**

**FIG 826**

A	P/N	REV.
SCALE	CAD FILE:	SHEET OF